

PROTECT YOUR FACILITY'S POTABLE WATER SYSTEM



Copper Silver Ionization Solutions
for Legionella Protection.



Powerful. Innovative. Reliable.

CSIDefender® copper silver ionization technologies have been proven in over 7,300 installations worldwide to prevent the growth and spread of Legionella bacteria in facility potable water systems.

The automated computer control system disperses industry proven copper and silver ion concentrations into the water distribution system to saturate the biofilm where Legionella bacteria grows and helps prevent potential expose risk for facility occupants.

CSIDefender® Quick Facts

CSIDefender® technologies are the only solutions that offer:

- ◆ Powerful POE controllers for up to 64% cost savings and smaller footprint
- ◆ Scalable solutions with up to 320 amps output capacity for any facility potable water loads
- ◆ True independent Multi-Cell Ionization activation, monitoring & control

Safe & Reliable for Facilities of Any Size, CSIDefender® POE solution technologies:

- ◆ Always work when properly sized & calibrated
- ◆ Always work when regular preventative maintenance is conducted
- ◆ Always work when depleted Ion Chamber Cells are replaced

Fully Automated Controllers



Software based and fully automated to anticipate and react to various water conditions

Automated variable power output levels of up to 180 DC at up to 160 amps

Industry leading Multi-Zone hardware and software to reduce technology footprint by up to 80%

Ion Chamber Cells

Quality schedule 40 (316) stainless steel that exceeds all water plumbing codes and fire building codes

Industry first internal laminar flow to reduce sedimentation and extend the lifespan of cells by up to 19%

Unique internal electrode protection to prevent premature physical water erosion





Getting Started

How to Properly Size the Best CSI Solution

CSIDefender® offers 46 different controllers that can provide a solution that perfectly fits any facility requirements.

How can you determine which CSI Solution is right for you?

STEP 1

POE Analyze Parameters & Water Load

- ◆ How many POE Zones does your facility have?
- ◆ Do you require a solution for a variable in-line or constant (tank-to-tank) potable water flow?
- ◆ What is the POE pipe size for each zone?
- ◆ What is the expected POE flow rate and daily water load for each zone?



STEP 2

Choose your CSIDefender® Point of Entry (POE) Application Model

MODEL NO.	OUTPUT (AMPS)	DC. DRIVES	CELLS INSTALLED	CONFIG	GPM	POE/GPD
CSI-E3AI	30	3	3	CSE	< 180	< 30K
CSI-E3FM	30	3	3	INL	< 180	< 30K
CSI-E3FS	30	3	3	T2T	< 180	< 30K
CSI-E4AI	40	4	4	CSE	< 240	< 40K
CSI-E4FM	40	4	4	INL	< 240	< 40K
CSI-E4FS	40	4	4	T2T	< 240	< 40K
CSI-E6AI	60	6	6	CSE	< 320	< 60K
CSI-E6FM	60	6	6	INL	< 320	< 60K
CSI-E6FS	60	6	6	T2T	< 320	< 60K
CSI-E8AI	80	8	8	CSE	< 480	< 80K
CSI-E8FM	80	8	8	FM	< 480	< 80K
CSI-E8FS	80	8	8	FS	< 480	< 80K
CSI-E12AI	120	12	12	CSE	< 640	< 120K
CSI-E16AI	160	16	16	CSE	< 960	< 160K
CSI-E20AI	200	20	20	CSE	< 1,200	< 200K
CSI-E32AI	320	32	32	CSE	< 1,920	< 320K

INL = In-Line variable water flow, T2T = Tank to Tank fix water flow, CSE = In-Line Variable or Tank to Tank water flow, Additional Models Available
CSIDefender® Model numbers and specs are subject to change without notice. Please consult your local vendor for details.

STEP 3

Render CSI Point of Entry (POE) Performance Specs

Contact your local representative to receive a complete project specific submittal package. Save time and money by leveraging our industry experts and get custom, open, and unbranded performance specifications that you can easily integrate into your master specs.

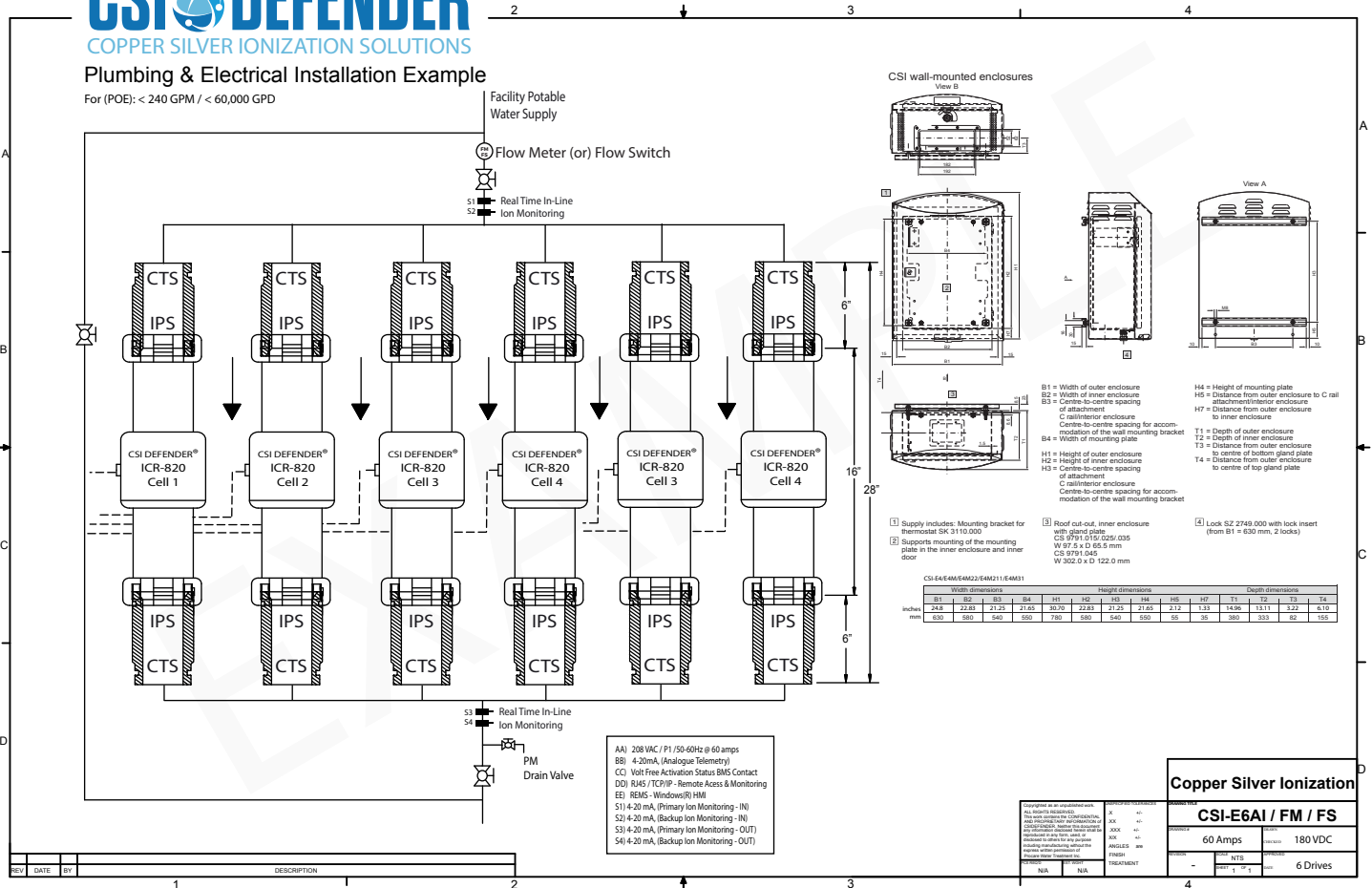


POE Installation Example



Plumbing & Electrical Installation Example

For (POE): < 240 GPM / < 60,000 GPD



Choose the best copper silver ionization solution that's been proven to prevent the growth and spread of Legionella bacteria in hotels, resorts, hospitals, commercial buildings, military facilities, and cruise ships around the world.

Choose CSIDefender®.



LEGIONELLA PROTECTION & COMPLIANCE FOR DOMESTIC POTABLE WATER NETWORKS



CSI DEFENDER

TIME TO UPGRADE YOUR FACILITY PLUMBING

E-MAIL

support@csidefender.com

PHONE

1-888-988-4667

© 2019 – All Rights Reserved

CSIDefender® is a registered USA and Canadian trademarks.

Manufactured in CANADA / Country of Origin: CANADA

Find a certified CSI vendor online at: <https://csidefender.com>

CSI DEFENDER[®]
COPPER SILVER IONIZATION SOLUTIONS

